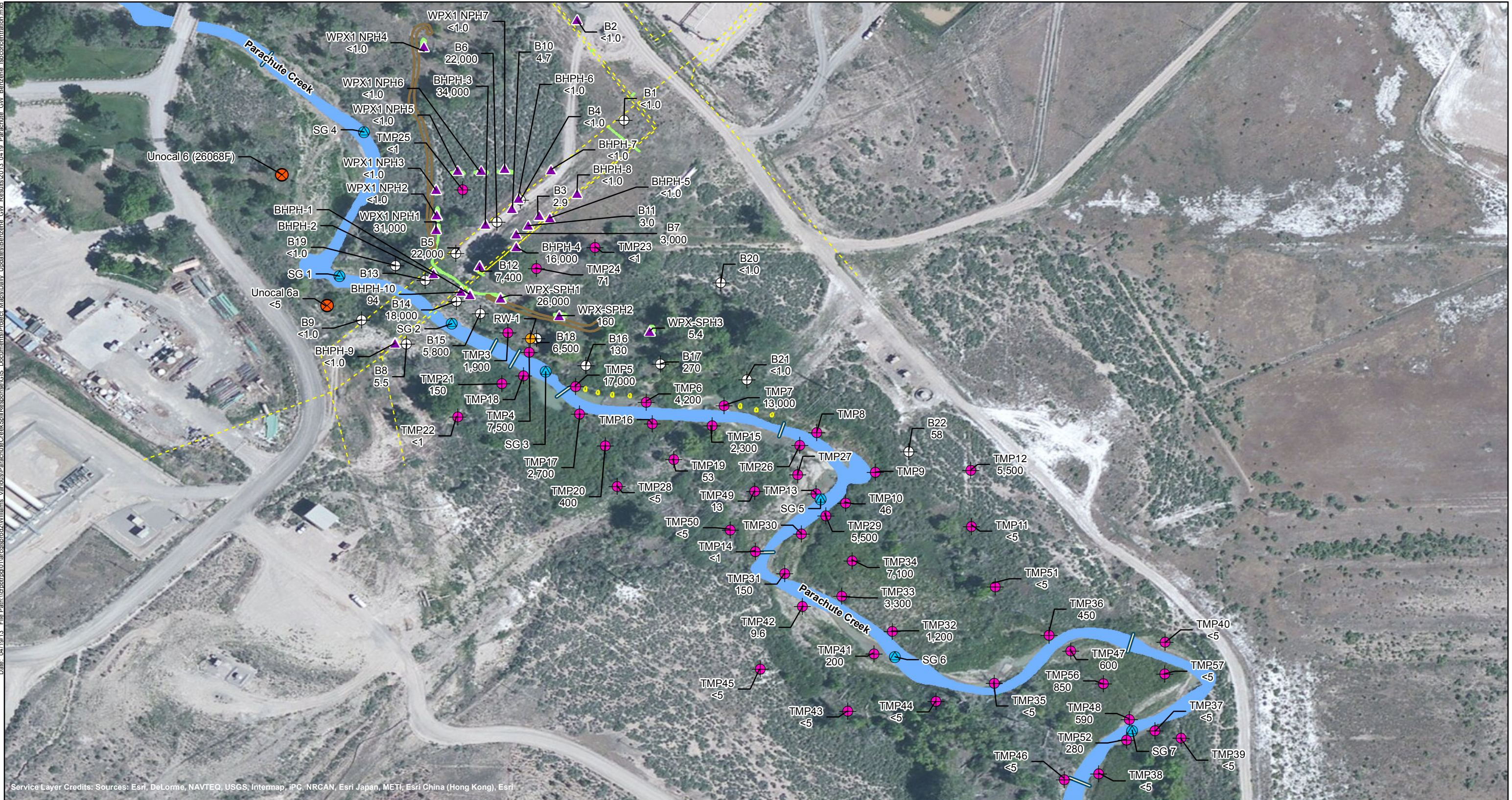


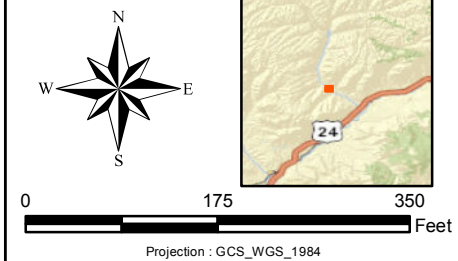
Date: 04/19/13 File Path: \\cbrtrd01\arcgispro2\Williams\_Various\ParachuteCreekSpillResponse\GIS\_Documents\Project\_Maps\Daily\_Updates\Benzene\_GW\_Results\2013\_0419\_Parachute\_GW\_Benzene\_Isoconcentration.mxd



Service Layer Credits: Sources: Esri, DeLorme, NAVTEQ, USGS, Intermap, IPC, NRCAN, Esri Japan, METI, Esri China (Hong Kong), Esri

- |                                     |          |                   |  |
|-------------------------------------|----------|-------------------|--|
| Recovery/Test Trench                | Berm     | Staff Gauge       | Monitoring Well  |
| Approximate Location of Mini-Trench | Boom     | Water Supply Well | Temporary Monitoring Well Point  |
| Parachute Creek                     | Pipeline | Recovery Well     | Other Fluid Level Gauging Location (Trench, Pothole, Temporary Boring) |

Notes:  
1) Benzene results reported in µg/L (micrograms per liter)



BARGATH LLC PARACHUTE CREEK GAS PLANT  
COGCC INCIDENT NUMBER 2232359

**MOST RECENT BENZENE CONCENTRATIONS  
IN GROUNDWATER AND  
ISOCONCENTRATION MAP - 04/19/2013**  
--WORKING DRAFT, SUBJECT TO ADDITIONAL DATA COLLECTION--

**CBI**

Shaw Environmental, Inc.  
(A CBI Company)  
9201 E. Dry Creek Rd.  
Centennial, CO 80112